



COMPRESSION FITTINGS FOR COPPER PIPE

515 Straight male connector

Available sizes: 1/2"x1/2", 1/2"x3/4"eurokonus, 3/4"x3/4" eurokonus



515 available sizes: 1/2"x1/2", 1/2"x3/4"eurokonus, 3/4"x3/4" eurokonus

SIZE	CODE	PACKING
1/2"x1/2"	5150012012	30/720
1/2"x3/4"	5150012034	20/480
3/4"x3/4"	5150034034	20/220

CERTIFICATIONS



TECHNICAL SPECIFICATIONS

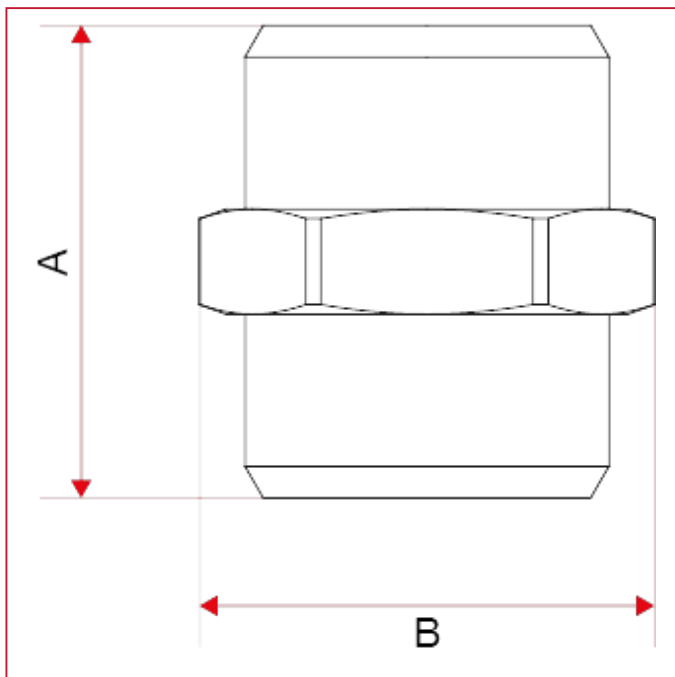
Male thread 1/2" equipped with a conical seat and inner diameter mm.16.

Male thread 3/4" eurokonus.

Male thread 1" equipped with a conical seat and inner diameter mm.22.

Maximum working pressure: 20 bar.

OVERALL DIMENSIONS



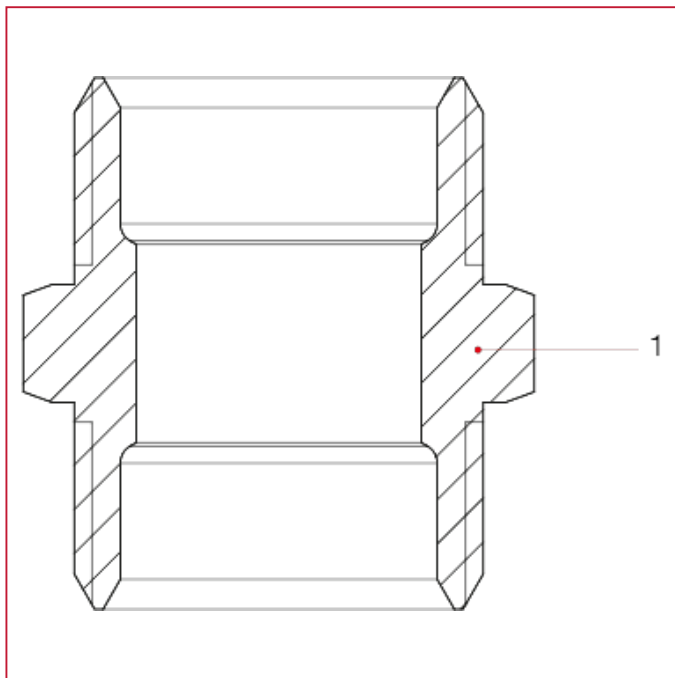


COMPRESSION FITTINGS FOR COPPER PIPE

515 available sizes: 1/2"x1/2", 1/2"x3/4" eurokonus, 3/4"x3/4" eurokonus

	1/2"x1/2"	1/2"x3/4"	3/4"x3/4"
A	27	30	32
B	26	29	29
Kg/cm2 bar	20	20	20
LBS - psi	290	290	290

MATERIALS



POS.	DESCRIPTION	N.	MATERIAL
1	Fitting	1	Brass PTL CW617N